

TECH BULLETIN: DRC INSIGHT Updates now Require Admin Rights on Windows and Mac Testing Devices

Revision Date: June 19, 2023

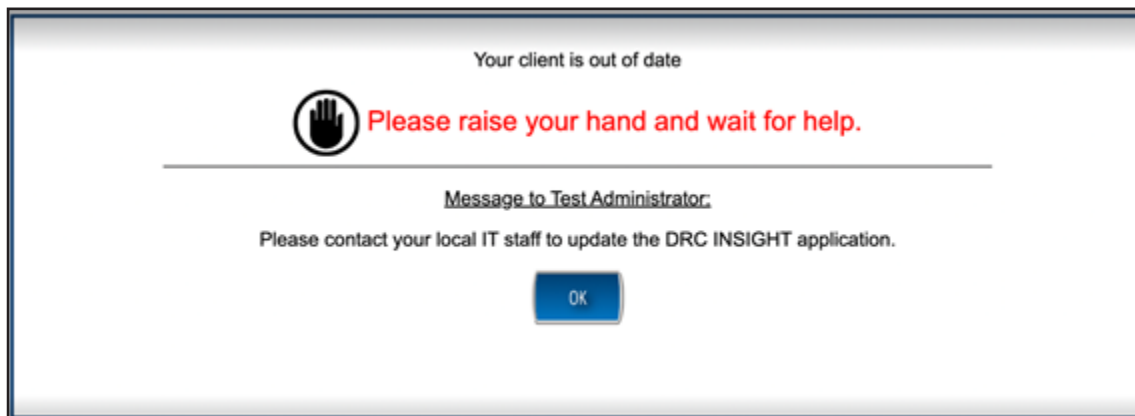
Summary of Security Enhancement

Beginning June 30, 2023, on Windows and Mac testing devices, the DRC INSIGHT application now must be updated by a user with Admin rights. *This change only affects sites that update on each device manually after launching DRC INSIGHT.*

If your site uses deployment software to update testing devices, you are *not* impacted since the deployments are performed by an Admin user.

Previously, for sites that updated testing devices manually after launching DRC INSIGHT, any user (including a student), could click the *Upgrade* button on a device to initiate an update.

Going forward, a new error message without the Upgrade button will display when a testing device requires a DRC INSIGHT update (**Note:** Only Linux users will still receive an error message with the Upgrade button). The new message will instruct users to contact their onsite or local IT staff (Admin users) to update the DRC INSIGHT application. In addition, the *Enable Auto Updates to testing devices* field, which enables manual updates, is being removed from the COS Configuration user interface.



FAQs

Are My Testing Devices Impacted by this Change?

YES

- If you use **Windows** (with DRC INSIGHT version 13 or 13.0.1) or **Mac** (with DRC INSIGHT version 13) testing devices and typically have a non-Admin user update each testing device manually after launching the DRC INSIGHT application.

NO

- If you use ChromeOS, iPadOS or Linux
- If you update multiple Windows or Mac testing devices using deployment software
- If you manually run the DRC INSIGHT application installer on a single workstation at a time

TECH BULLETIN: DRC INSIGHT Updates now Require Admin Rights on Windows and Mac Testing Devices



Revision Date: June 19, 2023

My Testing Devices are Impacted, What's the Best Way to Proceed?

You need to work with your IT Support staff to perform DRC INSIGHT updates in the future. Make arrangements well in advance of testing to have IT Support update the testing devices.

DRC recommends using deployment software to automate the update process. Software deployment information and processes are described in detail for each testing device type in of the *DRC INSIGHT Technology User Guide*.