

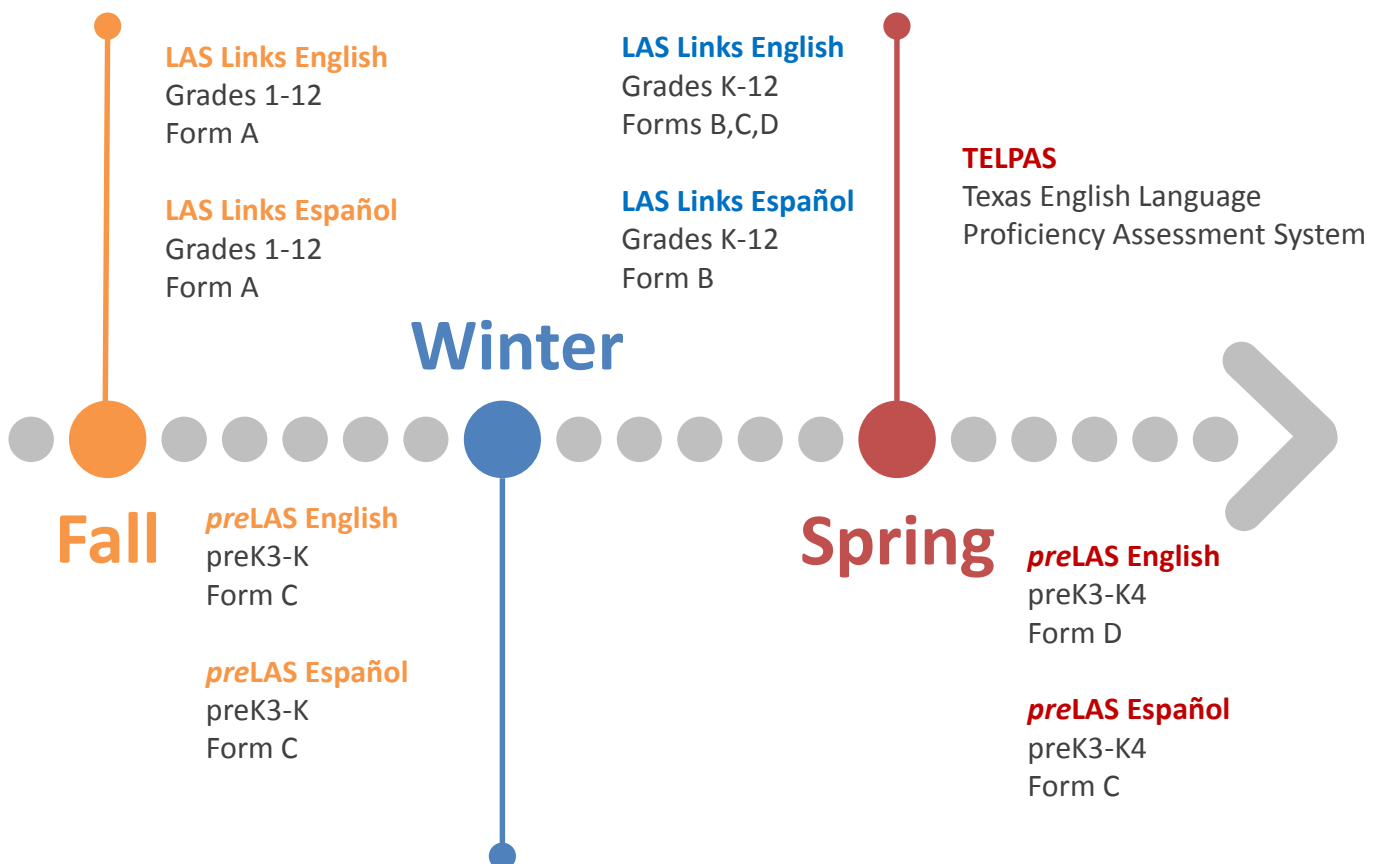


Beyond EL Identification: Progress Monitoring with *preLAS* and LAS Links









The LAS Battery of Assessments offers several additional forms that may be used for the purpose of progress monitoring.

Grade Level	Approved Assessment(s) for Identification	Additional Forms Approved for Progress Monitoring
<i>preK3, preK4</i>	<ul style="list-style-type: none"> <i>preLAS</i> English Form C <i>preLAS</i> Español Form C 	<ul style="list-style-type: none"> <i>preLAS</i> English Form D <i>preLAS</i> Español Form C Pre-Literacy component – you already have this!
Kindergarten	<ul style="list-style-type: none"> <i>preLAS</i> English Form C <i>preLAS</i> Español Form C 	<ul style="list-style-type: none"> <i>preLAS</i> English Form D <i>preLAS</i> Español Form C LAS Links Form B LAS Links Form C LAS Links Form D LAS Links Español Form A LAS Links Español Form B
1-12 Grades	<ul style="list-style-type: none"> LAS Links English Form A 	<ul style="list-style-type: none"> LAS Links English Form B LAS Links English Form C LAS Links English Form D
1-6 Grades	<ul style="list-style-type: none"> LAS Links Español Form A 	<ul style="list-style-type: none"> LAS Links Español Form A (7-12 Grades) LAS Links Español Form B

English and Spanish Language Progress Monitoring (preK3-12)



preLAS and LAS Links proficiency levels align with the TELPAS proficiency levels allowing stakeholders to gauge student performance on the TELPAS assessment:

ELPS – TELPAS Beginning	ELPS – TELPAS Intermediate	ELPS – TELPAS Advanced	ELPS – TELPAS Advanced High
			
			
LAS Links Level 1 Beginning	LAS Links Level 2 Early Intermediate	LAS Links Level 3 Intermediate	LAS Links Levels 4&5 Proficient & Above Proficient

LAS Links English Forms C and D and Español B align with the ELPS allowing stakeholders to monitor language acquisition progress and provide targeted instruction well before the TELPAS.

Texas ELPS	LAS Links English Forms C and D LAS Links Español Form B
Focus on “Cross-curricular second language acquisition” in each of the 4 domains: Speaking, Listening, Reading, Writing;	Assesses in all 4 domains: Speaking, Listening, Reading and Writing
<ul style="list-style-type: none"> • K-12 English • K-6 Spanish • Speaking: using grade-level content area vocabulary • Listening: learn academic vocabulary • Reading: respond to questions commensurable with content area and grade level needs • Writing: fulfill content area writing needs 	K-12 English K-12 Spanish
	Provides test items in the areas of Math, Science, Technical Subjects, Reading, Language Arts and History
	Test results/Reports (for both English and Spanish LAS Links forms) provide stakeholders with detailed information regarding students’ language proficiency in content area vocabulary

** The comprehensive ELPS/LAS Links alignment study is available upon request*



Student ID #: 1988416581
Birthdate: 03/04/2007
Gender: FEMALE
Grade: 4
Class: MADDEN

School: ASHLAND ELEMENTARY
District: MARINA UNION DISTRICT
Test Date: 03/01/19
Form/Level: D2

About the LAS Links Assessments

LAS Links® is an integrated suite of English and Spanish language proficiency assessments and instructional tools designed to strengthen your English language learning (ELL) program.

Proficiency Levels

Level 1: Beginning	Level 2: Early Intermediate	Level 3: Intermediate	Level 4: Proficient	Level 5: Above Proficient
		✓		

Proficiency Level Definition

Level 1: Beginning At Level 1, student is beginning to develop the ability to communicate at school. The student may communicate nonverbally or through the home language.	Level 2: Early Intermediate At Level 2, student is developing the ability to communicate for different purposes at school. The student makes errors that can interfere with communication.	Level 3: Intermediate At Level 3, student is developing the ability to effectively communicate for different purposes at school. The student may make errors that interfere with communication.	Level 4: Proficient At Level 4, student can effectively communicate for different purposes at school. The student may produce some errors.	Level 5: Above Proficient At Level 5, student effectively communicates for social and academic purposes with few, if any, errors.
--	--	---	--	---

Student Results



Reporting Category	Scale Score	Student's Performance				
		Beginning	Early Intermediate	Intermediate	Proficient	Above Proficient
Listening (LI)	479	307	438	475	511	553
Speaking (SP)	443	307	438	475	511	553
Reading (RD)	300	307	438	475	511	553
Writing (WR)	434	307	438	475	511	553
Comprehension ² (LI + RD)	371	307	438	475	511	553
Oral ³ (SP + LI)	461	307	438	475	511	553
Literacy ⁴ (RD + WR)	368	307	438	475	511	553
Productive ⁵ (SP + WR)	457	307	438	475	511	553

¹ Overall Scale Score is an average of Speaking, Listening, Reading, and Writing. ² Comprehension is based on all items in the Listening and Reading subtests. ³ Oral is based on all items in the Reading and Writing subtests.

⁴ Literacy is based on all items in the Reading and Writing subtests. ⁵ Productive is based on all items in the Speaking and Writing subtests.

The Student Report provides detailed information on the student's proficiency levels and the proficiency level definitions.

The Student Report also provides information on the student's performance within the academic language strands (Foundational Skills; Language Arts, Social Studies, History; and Science, Math, and Technical Subjects). Scores for academic language strands are provided as diagnostic scores.



Academic Report	Speaking			Listening			Reading			Writing		
	Points Obtained	Points Possible	% Correct	Points Obtained	Points Possible	% Correct	Points Obtained	Points Possible	% Correct	Points Obtained	Points Possible	% Correct
Social, Intercultural, and Instructional Communication	13	13	100	6	8	75	7	10	70	6	10	60
Academic	26	28	93	10	12	83	12	20	60	13	22	59
Foundational Skills	N/A	N/A	N/A	N/A	N/A	N/A	N/A	N/A	N/A	N/A	N/A	N/A
Language Arts, Social Studies, History	14	14	100	4	6	66.7	5	7	71.4	6	11	54.5
Mathematics, Science, Technical Subjects	12	14	85.7	6	6	100	5	7	71.4	7	11	63.6
Total Score	39			16			19			19		

N/A = Student data invalidated

Reading Links

This report provides a list of books based on your student's performance. It can be used to assist your student in improving reading skills.

Recommended Lexile® Range = 706L-855L

Student's Lexile® Measure = 705L-855L

Suggested Titles	Author	Lexile
If the World Were a Village	Smith, David J. Armstrong, Shelagh	710L
Sherlock Holmes and the Adventure at the Copper Beaches	Rohrbach, Sophie Morrow, J.T.	720L
So You Want to be President?	St. George, Judith; Small, David	730L
A Wrinkle in Time	L'Engle, Madeleine	740L
The Man Who Went to the Far Side of the Moon	Osa, Nancy	750L
The Giver	Lowry, Lois	760L
Jumping Troc	Saldana, Rene, Jr.	770L
Rules	Lord, Cynthia	780L
The Schwa Was Here	Schusterman, Neal	790L
Rocerto Clemente: Pride of the Pittsburgh Pirates	Winter, Jonah	800L
Bull Run	Fleischman, Paul	810L
Criss Cross	Perkins, Lynne Rae	820L
Evolution of Calpurnia Tate	Kelly, Jacqueline	830L
The Wanderer	Creach, Sharon	840L
The Man Who Went to the Far Side of the Moon	Schlyffert, Bea Ulmsa	850L
Extra Row Needed	Extra, Row	800L

General Interpretation

Listed above is a selection of books that should provide an appropriate reading challenge for your student, based on his or her performance on the LAS Links Reading test. The books have been chosen from reading lists published by various professional organizations and associated ones and have been reviewed to ensure content appropriateness. All of the books listed should be available at public libraries, school libraries, or bookstores.

The Lexile measure and Lexile range have been provided to assist you in determining other titles that may offer an appropriate challenge for your student. For more information about Lexile measures and additional reading materials, visit www.Lexile.com.

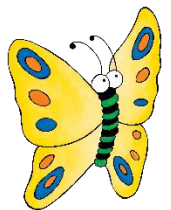
LEXILE® and LEXILE® Framework are registered trademarks of MetaMetrics, Inc., and are registered in the United States and abroad. Copyright ©2019 MetaMetrics, Inc. All rights reserved. For proper use and copyright, see MetaMetrics branding at www.metametrics.com/meta-metrics-branding-guidelines.

The Student Report includes a student's Lexile range and suggested books to read!

School Name ↑	Student Name ↑	Grade ↑	Speaking Scale Score	Speaking Proficiency Level	Total Speaking PL	Speaking Number Correct
		01	464	INTERMEDIATE	3	27
		06	459	EARLY INTERMEDIATE	2	9
		02	481	INTERMEDIATE	3	27
		04	470	EARLY INTERMEDIATE	2	16
		09	507	INTERMEDIATE	3	26
		05	406	BEGINNING	1	3

Provides robust reports including:

- Student Proficiency Reports
- Roster Reports
- Strand Reports
- Longitudinal Reports (Including Student History Reports)
- Reading Links/Lexile Reports
- Home Reports
- Item Analysis Reports



preLAS

Pricing:

- All preLAS materials are priced at the deeply discounted Texas contract pricing
- All LAS Links Online student test licenses are priced at the deeply discounted Texas contract pricing
- Utilize our LAS Battery of Assessments Progress Monitoring Order form found at www.LASLinks.com/Texas

Additional services and reporting available for purchase:

DRC Scoring Services are available for progress monitoring (Additional Services Quoting Tool found at www.LASLinks.com/Texas)

For more information, please visit

www.LASLinks.com/Texas

or contact:

Texas ORDERING Support Help Desk:

833.867.5679 option 1

LASOrderTX@datarecognitioncorp.com

DATA RECOGNITION

DRC

CORPORATION

