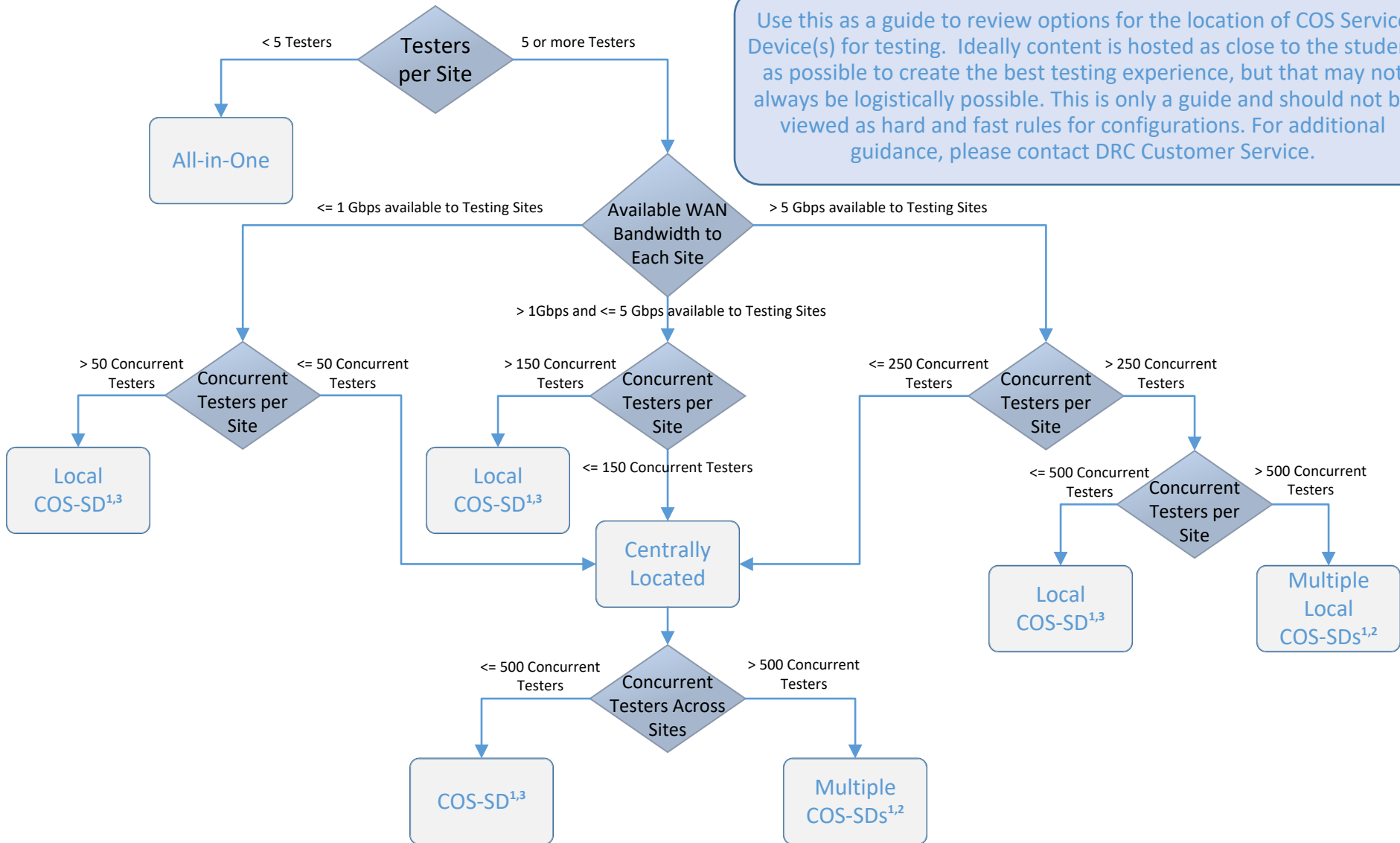




Central Office Services (COS) Service Device Decision Guide

Use this as a guide to review options for the location of COS Service Device(s) for testing. Ideally content is hosted as close to the student as possible to create the best testing experience, but that may not always be logistically possible. This is only a guide and should not be viewed as hard and fast rules for configurations. For additional guidance, please contact DRC Customer Service.



¹ The number of concurrent testers the COS Service Device can support will vary depending upon the hardware configuration. See Supported System Requirements for details.

² Multiple COS Service Devices can be configured using the default COS round robin load balancing or can be configured behind a locally supported hardware load balancer.

³ Under the proper configuration, a COS Service Devices can support a large number of concurrent students, but consider using multiple COS Service Devices and round robin load balancing rather than one big device to provide redundancy to the environment.